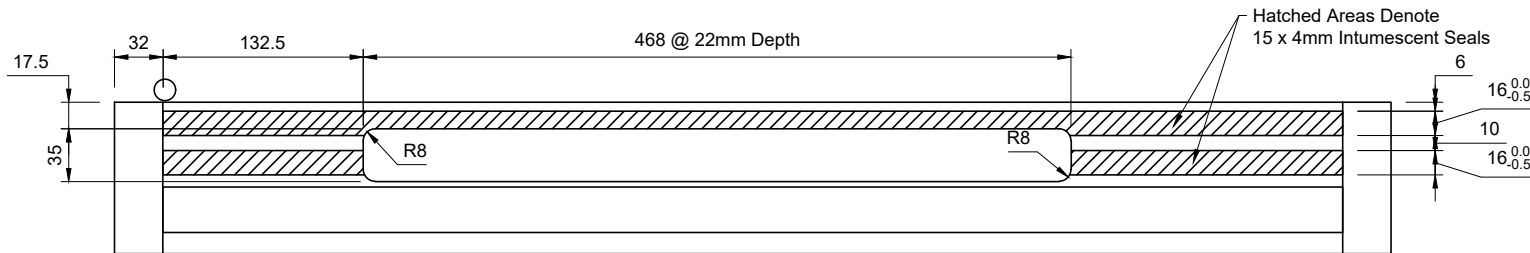
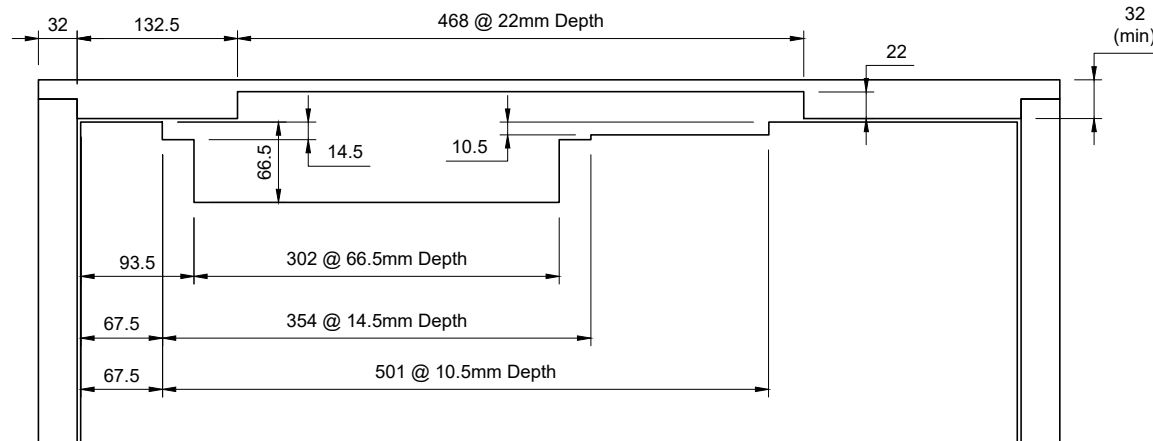
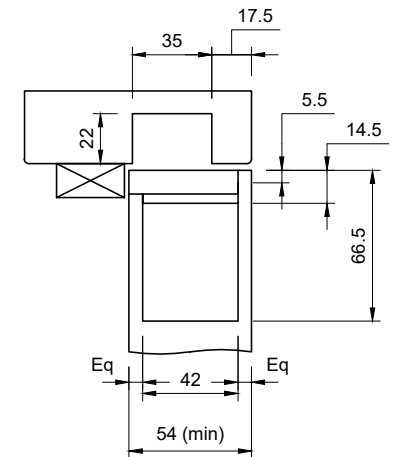


Frame Head Machining



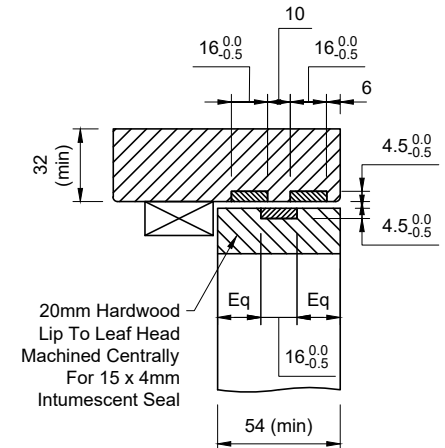
All Dimensions Are
In mm Unless Stated



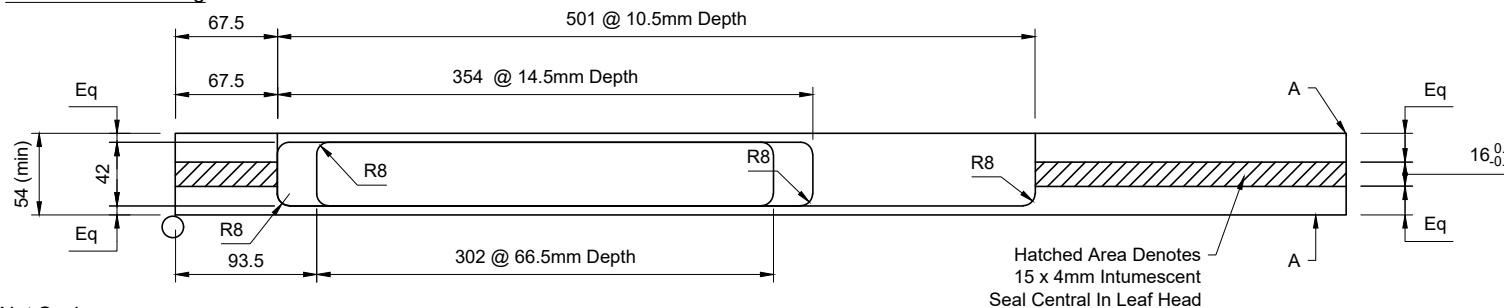
Notes:

- 20mm Hardwood Lip Min Density 640kg/m³ To Leaf Head
- Fit 15 x 4mm Intumescent Seal To Centre Line Of Leaf Head Prior To Machining For Closer
- Hardwood Frame Minimum Density 640kg/m³ & Minimum Section 32mm Thick
- Use Manufacturer's Intumescent Kit Only
- All Rebates In Door & Frame Head To Be Fitted With Intumescent Material As Per Manufacturer's Instructions See CF140
- Perimeter Intumescent Fire Seals To By-Pass The Slide Channel By A Minimum Of 10mm On The Opening Side
- **Dimensions Include Allowances For Intumescent Material**

Section A - A




Leaf Head Machining



Do Not Scale.

Description: **Concealed Closer Machining - CF5229 - FD60 - Dorma ITS96 3-6**

If In Doubt Ask!

| | | | | | |
|---------------------------|-----------------------------|-----------|-------------------------|--|--|
| Drawn By: P. Brash | Approved: Approved | Revision: | Date: 14/02/2024 | Drawing No: DP19560 Rev 01 |  Unit 6, Ranskill Court, Sheffield, |
| Size: See Above | Tolerance: +/- 0.5mm | | Fire Rating: | | |
| Job No: N/A | © Doorpac Ltd | | FD60S | | |